

### DIMENSIONES Y CAPACIDAD

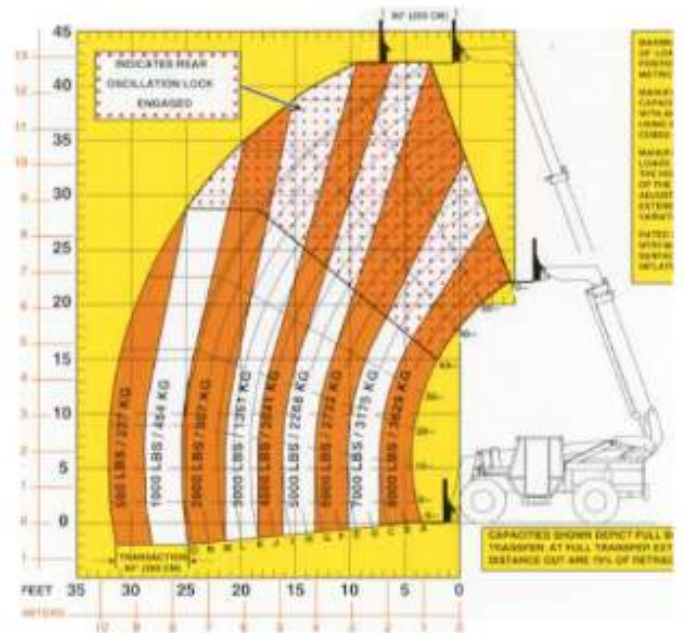
#### 844C-42 TELEHANDLER

Altura total de Trabajo con operario	12,2 m
Altura	2,41 m
Longitud	7,1 m
Ancho	2,4 m
Fuente Combustion	
Capacidad en canasta ( Kilos )	4.000
Peso total del equipo ( Kilos )	10.505



#### Attachments

- Standard fork carriages
  - Side-tilt carriages
  - Hydraulic fork position carriage
  - Lumber forks
  - Truss boom with or without winch
  - Sweeper broom with bucket
  - Concrete hoppers
- Framers carriages
  - Swing carriages
  - Pallet forks
  - Cubing forks
  - Augers
  - 1 $\frac{1}{2}$  cu. yd. (.96 cu. m) light material bucket



Brazo Telescópico Brazo Eléctrico Brazo Articulado Tipo Tráiler

Tijeras

Unipersonales

Telehandler

Tijeras 4x4

# 844C-42 Telescopic Handler Specifications

## Performance

Max. Capacity .....8,000 lb. (3628,8 kg)  
 Lift height .....42 ft. (12,8 m)  
 Land height.....42 ft. (12,8 m)  
 Max. Capacity @  
 full height .....6,000 lb. (2721,6 kg)  
 TransAction.....80 in. (203,2 cm)  
 Max. forward reach.....32 ft. (9,7 m)  
 Capacity @ max.  
 forward reach .....500 lb. (226,8 kg)  
 Reach below grade. ....23 in. (58,4 cm)  
 Outside turn radius ..13 ft. 8 in. (4,2 m)  
 Frame leveling .....12.5 degrees L/R

## Dimensions

Height .....95 in. (241,3 cm)  
 Length (w/ 42 in. forks) ..23 ft. 7 in. (7,1 m)  
 Width .....8 ft. (2,4 m)  
 Wheelbase .....124 in. (314,9 cm)  
 Ground clearance .....16 in. (40,6 cm)  
 Weight .....23,160 lb. (10,505 kg)

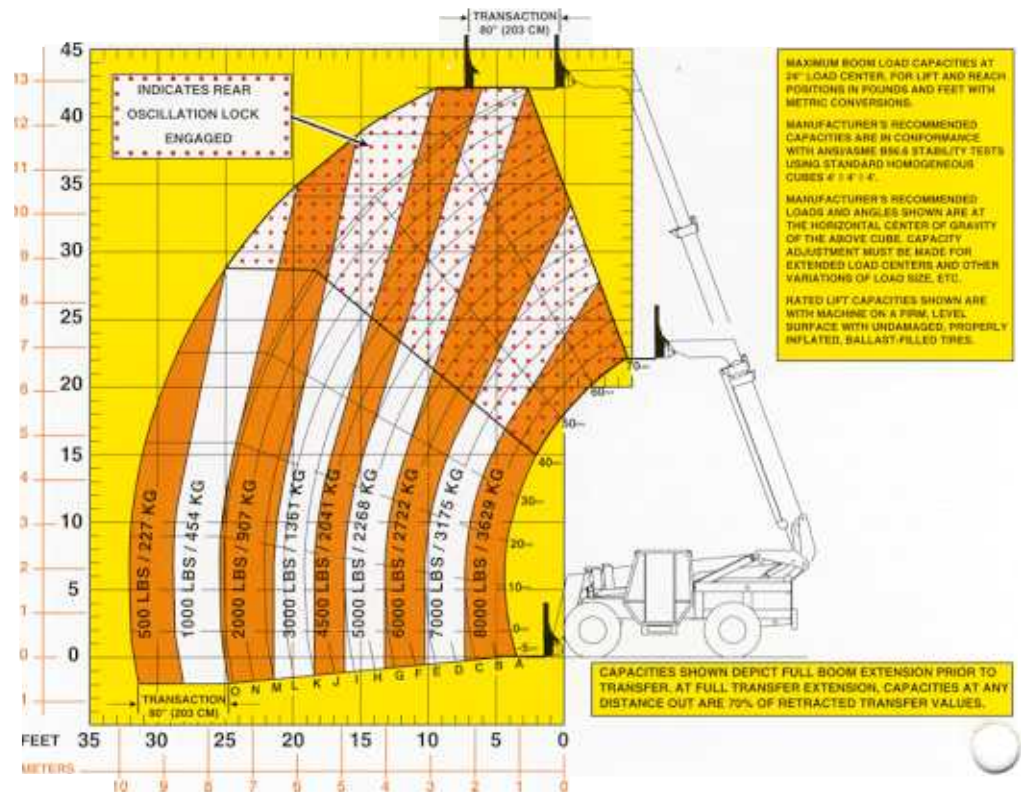
## Drive Train

Engines .....Cummins 110 HP  
 (82 kW) turbo diesel  
 John Deere 115 HP  
 (85 kW) turbo diesel  
 Transmission.....4-speed Powershift  
 Axles .....Outboard planetary  
 front & rear  
 Brakes .....Wet disc  
 Tires.....All terrain 13.00 x 24,  
 12-ply

## Standard Features

4 wheel drive .....Yes  
 4 wheel steer, round, front & crab.....Yes  
 Automatic fork leveling .....Yes  
 Multi-function joystick control .....Yes  
 Number of boom sections .....3  
 Auxiliary hydraulics to  
 boom end.....Yes

## Load Chart



## Options

- Multiple tire options
- Cab enclosure options
- Suspension seat
- Outriggers
- Light packages
- Engine block heaters

## Attachments

- Standard fork carriages
- Side-tilt carriages
- Hydraulic fork position carriage
- Lumber forks
- Truss boom with or without winch
- Sweeper broom with bucket
- Concrete hoppers
- Framers carriages
- Swing carriages
- Pallet forks
- Cubing forks
- Augers
- 1½ cu. yd. (.96 cu. m) light material bucket

© Copyright 1999. Lull reserves the right to make changes in design and specifications without notice and without incurring obligation as to units already sold.

B-844C42-3-99



## Lull International, Inc.

3045 Hwy. 13  
 St. Paul, MN 55121  
 (651) 454-4300 Fax: (651) 454-9225  
 Website: [www.Lull-International.com](http://www.Lull-International.com)