

DIMENSIONES Y CAPACIDAD

G6-42A TELEHANDLER

| | |
|--------------------------------------|--------|
| Altura total de Trabajo con operario | 12,8 m |
| Altura | 2,39 m |
| Longitud | 5,4 m |
| Ancho | 2,4 m |
| Fuente Combustion | |
| Capacidad en canasta (Kilos) | 2.721 |
| Peso total del equipo (Kilos) | 9.476 |



Model G6-42A

TELEHANDLER



Performance

| | | |
|---------------------------------|-----------|-----------|
| Rated Capacity | 6,600 lb | 2,994 kg |
| Maximum Lift Height | 42 ft | 12.8 m |
| Load at Max Height | 6,000 lb | 2,721 kg |
| Maximum Forward Reach | 29 ft | 8.84 m |
| Load at Max Reach | 1,000 lb | 454 kg |
| Frame Leveling | 10° | |
| Lift Speed (boom retracted) | | |
| Up | 12 sec | |
| Down | 9 sec | |
| Boom Speed (extended/retracted) | | |
| Extended | 13.6 sec | |
| Retracted | 9.7 sec | |
| Top Travel Speed (4-Speed) | 20 mph | 32 kph |
| Drawbar Pull (loaded) | 24,000 lb | 10,886 kg |
| Outside Turning Radius | 12 ft | 3.66 m |
| Operating Weight | 20,890 lb | 9,476 kg |

Standard Specifications

Engine

| | | |
|---------------------------|-----------------------|--------|
| Make and Model | Cummins QSB3.3L ATAAC | |
| No. of Cylinders | 4 | |
| Displacement | 202 cu in. | 3.3 L |
| Gross Power Basic | 100 hp | 75 kW |
| Maximum Torque @ 1600 rpm | 306 lb-ft | 414 Nm |
| Fuel Tank Capacity | 38 gal | 141 L |

Transmission

- Powershift with torque converter.
- 4-speed forward and 3-speed reverse.

Axles

- Trunnion mounted planetary 55° steer axles.
- Integral steer cylinder.
- High bias limited slip differential on front axle.

Brakes

- Service brakes are inboard wet disc brake on front axle.
- Parking brakes are wet disc spring-applied hydraulic release.

Tires

- Standard 370/75-28
- Optional Foam-Filled or Solid

Cab

- Certified ROPS/FOPS structure
- Adjustable seat
- Horn

Steering 4-Wheel

- Power steering with manual backup.
- Operator selectable 4-wheel circle, 4-wheel crab, 2-wheel front.

Instruments

- Volt meter
- Hourmeter
- Engine oil pressure gauge
- Temperature gauge
- Fuel gauge

Hydraulic System-Implement

| | | |
|----------|--------|---------|
| Capacity | 40 gal | 151.4 L |
|----------|--------|---------|

- Single-section gear pump.
- Auxiliary hydraulics used for all attachments equipped with cylinders or other hydraulic components.

Accessories & Options

- Enclosed Cab
- Auxiliary Electrics
- Road Lights
- Air Conditioning
- Work Lights
- Rotating Beacon
- Pintle Hook
- Fenders
- Brick Guard
- Arctic Package
- Hydraulic Quick Switch

Attachments

| | | |
|-----------------------------------------------------------|-------------------------------------------------------------------------------------|----------------------------------------------------------------------------------------|
| Standard Carriage | 50 in. 60 in. 72 in. | 1.3 m 1.5 m 1.8 m |
| Side-Tilt Carriage | 50 in. 60 in. 72 in. | 1.3 m 1.5 m 1.8 m |
| Swing Carriage (90°) | 72 in. | 1.8 m |
| Dual Fork Positioning Carriage | | |
| Side-Shift Carriage | 50 in. | 1.3 m |
| Tower | 8 ft | 2.4 m |
| For use on 50 in. (1.3 m) Standard or Side-Tilt Carriage* | | |
| Pallet Forks | 2.36 in. x 4 in. x 48 in. 2.36 in. x 5 in. x 48 in. 2.00 in. x 6 in. x 72 in. | 60 mm x 102 mm x 1.2 m 60 mm x 127 mm x 1.2 m 51 mm x 152 mm x 1.8 m |
| Lumber Forks | 1.75 in. x 7 in. x 60 in. 2.36 in. x 6 in. x 60 in. | 44 mm x 178 mm x 1.5 m 60 mm x 152 mm x 1.5 m |
| Cubing Forks | 2 in. x 2 in. x 48 in. | 51 mm x 51 mm x 1.2 m |
| Fork Extensions | 90 in. | 2.3 m |
| Material Bucket | 72 in., 1.0 cu yd 96 in., 1.5 cu yd 102 in., 2.0 cu yd | 1.8 m, 0.76 m ³ 2.4 m, 1.15 m ³ 2.6 m, 1.53 m ³ |
| Grapple Bucket | 96 in., 1.75 cu yd | 2.4 m, 1.34 m ³ |
| Truss Boom | 12 ft, 2,000 lb 15 ft, 2,000 lb 12 ft with winch, 2,000 lb | 3.7 m, 907 kg 4.6 m, 907 kg 3.7 m, 907 kg |
| Fork Mounted Work Platform | 8 ft, 1,000 lb capacity | 2.4 m, 455 kg capacity |
| Lifting Hook | | |

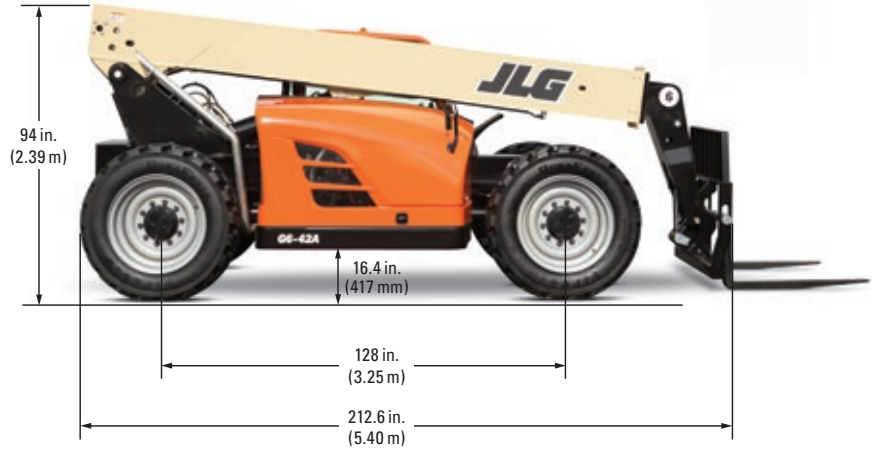
* Requires auxiliary electrics

Model G6-42A

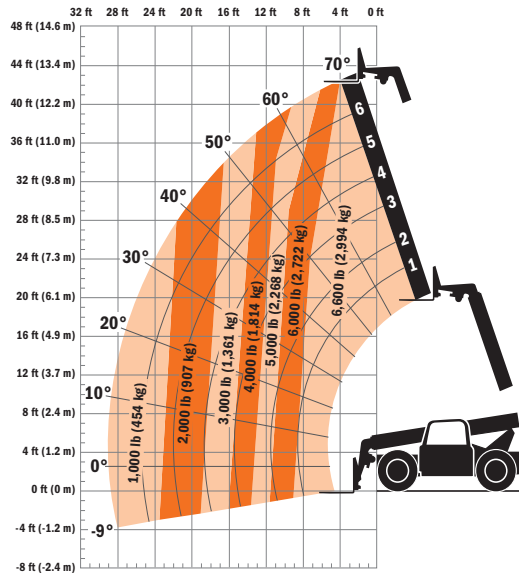
TELEHANDLER

Dimensions

All dimensions are approximate.



Load Chart Dimensions



IMPORTANT

Rated lift capacities shown are with machine equipped with carriage and pallet forks. The machine must be level on a firm surface with undamaged, properly inflated tires. Machine specifications and stability are based on rated lift capacities at specific boom angles and boom lengths. (If specifications are critical, the proposed application should be discussed with your dealer.) DO NOT exceed rated lift capacity loads, as unstable and dangerous machine conditions will result. DO NOT tip the machine forward to determine the allowable load. Use only JLG approved attachments with proper material handler model/attachment load capacity charts displayed in the operator's cab. OSHA requires all rough terrain forklift operators be trained according to OSHA 29 CFR 1910.178 (1).

Due to continuous product improvements, JLG Industries reserves the right to make specification and/or equipment changes without prior notification. This machine meets or exceeds ASME B56.6-1998 as originally manufactured for intended applications.

Form No.: SS-G642A-15M
Part No.: 3132207
R 101206
Printed in USA



JLG Industries, Inc.
1 JLG Drive
McConnellsburg, PA 17233-9533
Telephone 717-485-5161
Toll-free in US 877-JLG-LIFT
Fax 717-485-6417
www.jlg.com

An Oshkosh Corporation Company